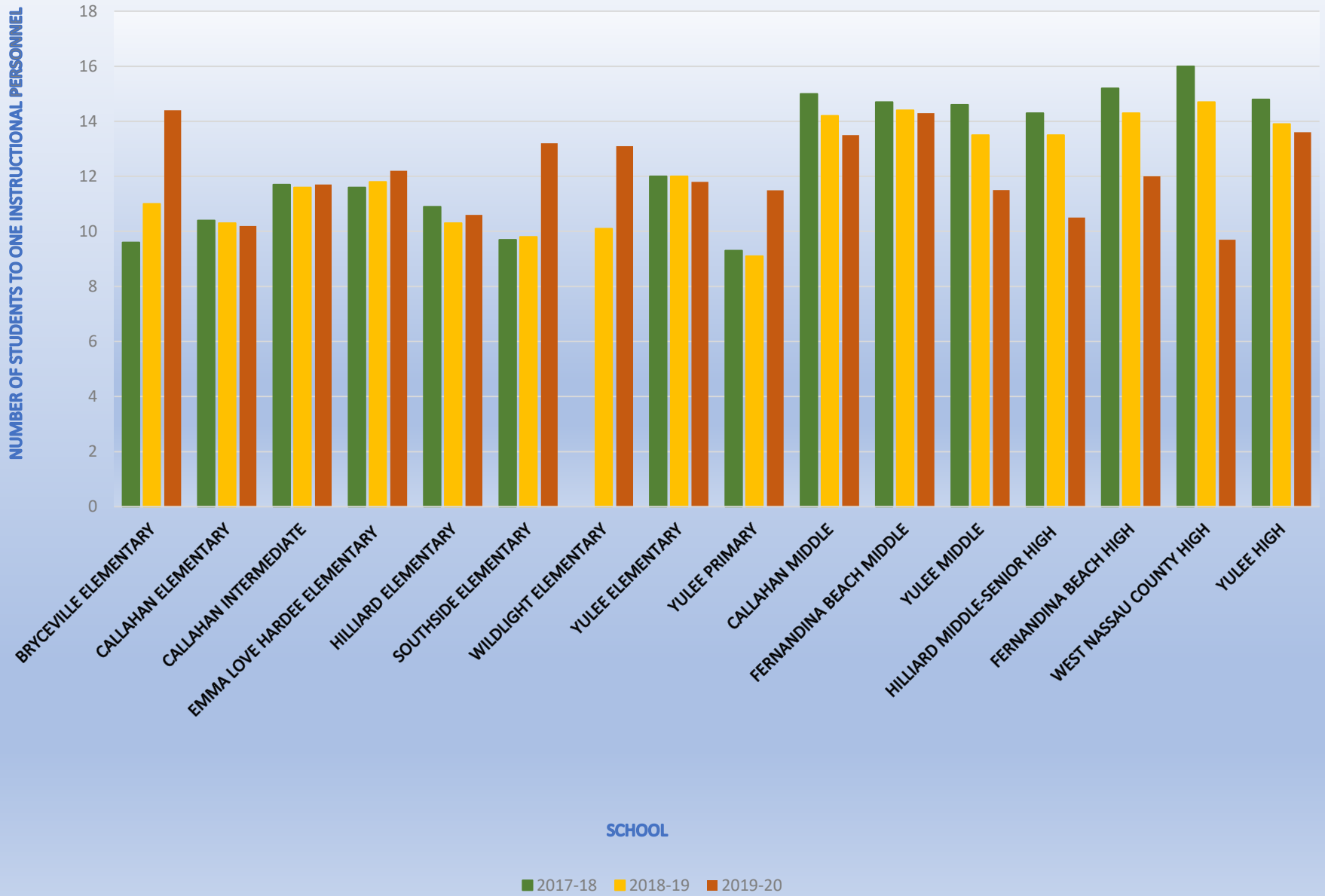
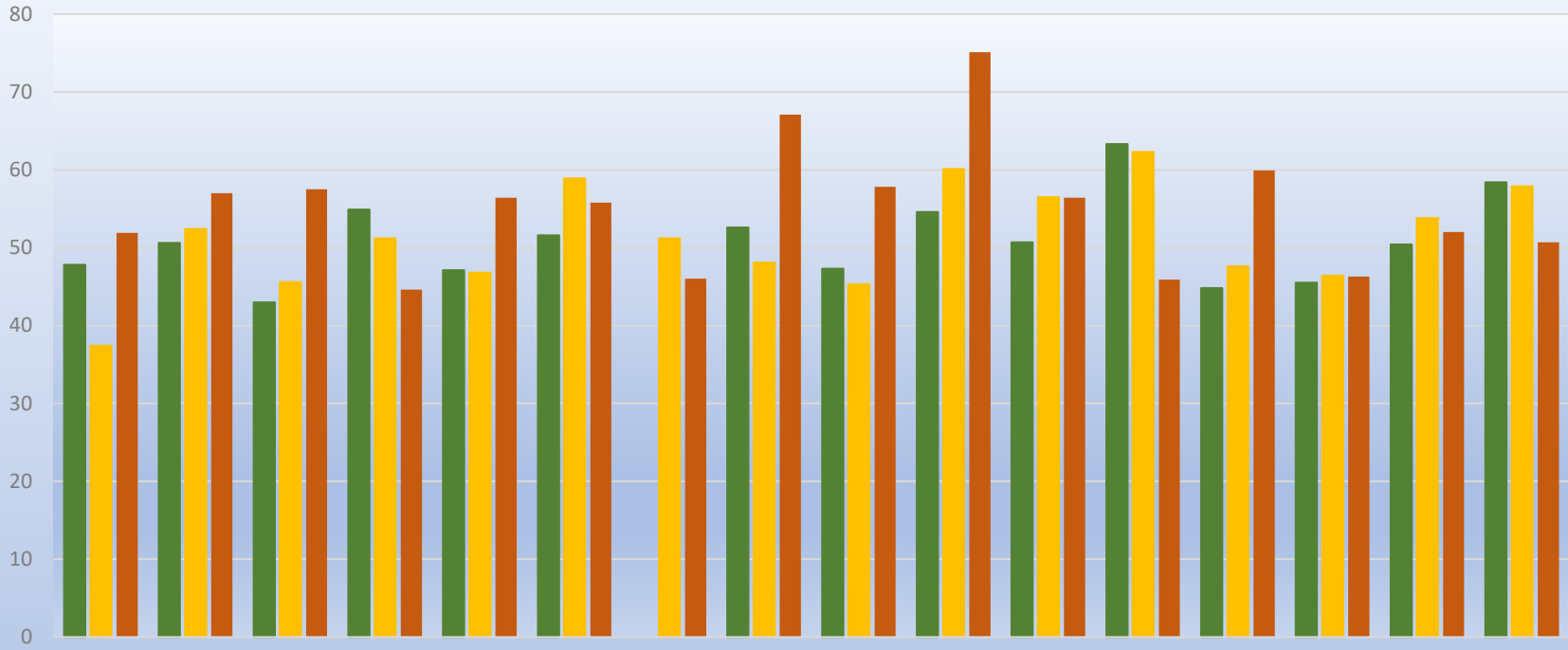


Full-Time Equivalent Students to Full-Time Equivalent Instructional Personnel



Full-Time Equivalent Students to Full-Time Equivalent Administrative Personnel

NUMBER OF STUDENTS TO ADMINISTRATIVE PERSONNEL



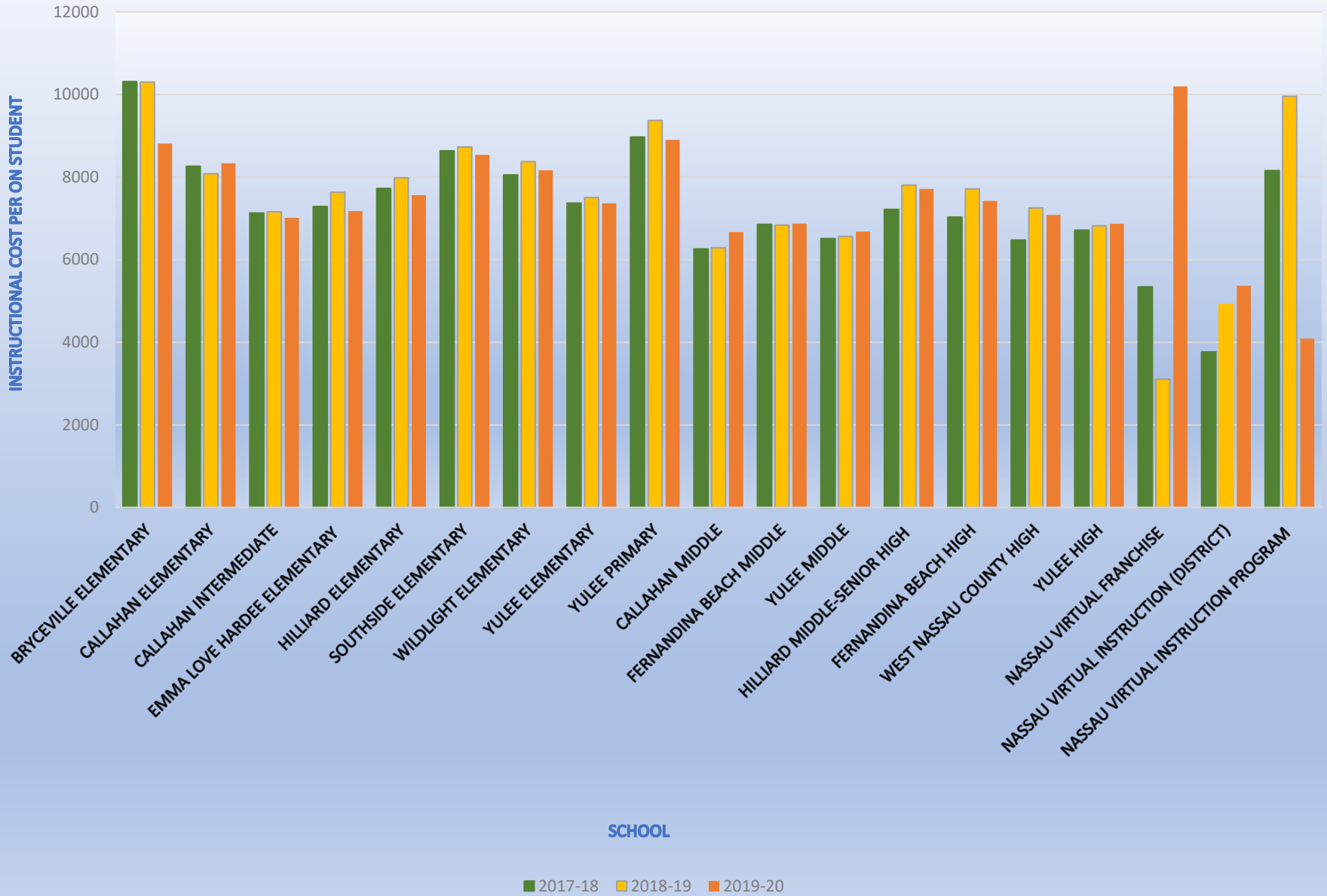
SCHOOL

2017-18 2018-19 2019-20

Operating Expenditures to Full-Time Equivalent Student



Instructional Expenditures Per Full-time Equivalent Student



General Administrative Expenditures as a Percentage of Total Budget

